

Instructions for Use | ZEMBRACE® SymTouch® (Zem-brace Sim-Touch) (sumatriptan succinate) Injection

Read this Instructions for Use before you start to use the ZEMBRACE® SymTouch®. There may be new information. This information does not take the place of talking with your healthcare provider about your medical condition or treatment. You and your healthcare provider should talk about ZEMBRACE SymTouch when you start taking it and at regular checkups.

The ZEMBRACE SymTouch Auto-injector is a single-use, pre-filled injection device with the exact dose you need. The device should be used only 1 time and then discarded.

⚠️ Important Precautions

Keep out of reach of children.

Do not use after the expiration date has passed.

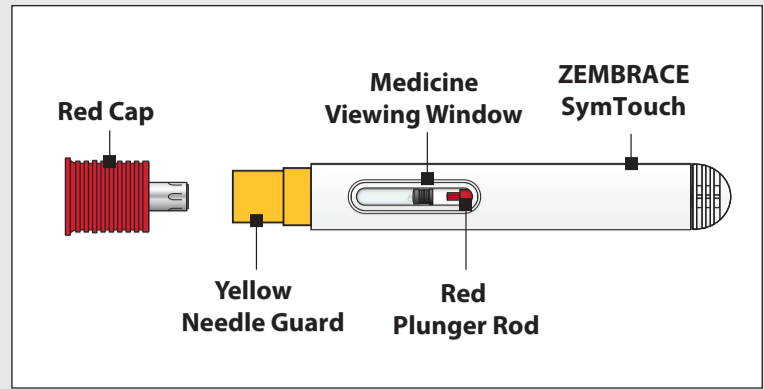
Do not store or expose to high temperatures.

Do not freeze.

Do not remove the Red Cap until you are ready to inject.

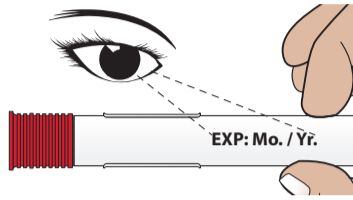
Do not use if dropped after removing the Red Cap.

Do not put or press thumb, fingers or hand over the Yellow Needle Guard.



Step 1 - Inspect Auto-injector and Gather Supplies

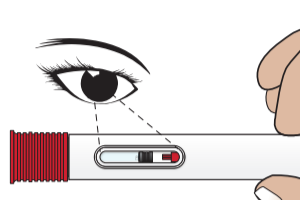
- ▶ 1A - Remove Auto-injector from the carton
- ▶ 1B - Check the Expiration Date on the Auto-injector
- ▶ 1C - Inspect the medicine through the Medicine Viewing Window
- ▶ 1D - Gather the following supplies



Do not use if the expiration date has passed.

Inspect the appearance of ZEMBRACE SymTouch Auto-injector medicine through the medicine viewing window. It must be a clear, colorless to pale yellow solution.

Do not inject the medicine if the solution looks discolored or cloudy or contains lumps, flakes, or particles.

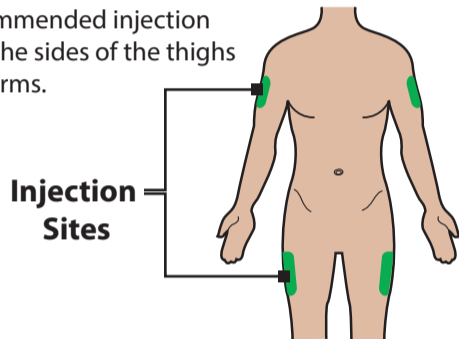


1. Auto-injector
 2. Alcohol Swab
 3. Sterile Cotton Ball or Gauze
 4. Puncture-Resistant Sharps Container
- ZEMBRACE SymTouch**
- Alcohol Swab, Sterile Cotton Ball or Gauze, Puncture-Resistant Sharps Container

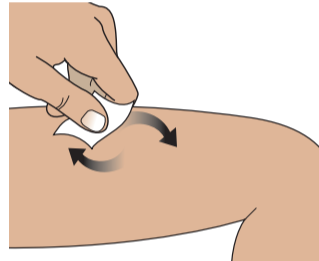
Step 2 - Choose and Prepare Your Injection Site

- ▶ 2A - Choose your injection site
- ▶ 2B - Clean the injection site with an alcohol swab
- ▶ 2C - Remove the Red Cap

The recommended injection sites are the sides of the thighs and the arms.

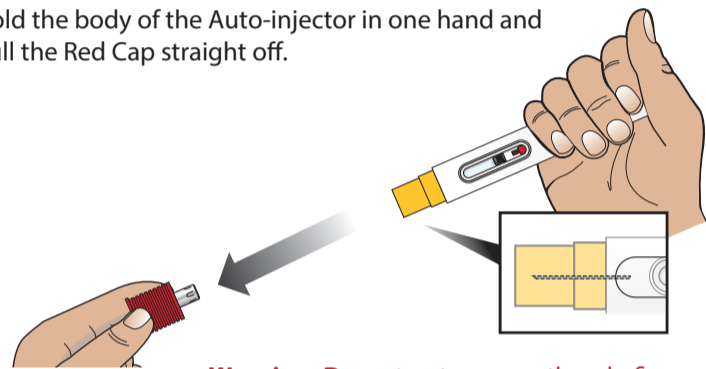


Caution: Do not inject where your skin is scarred, bruised, tender, red or near any open wound.



Do not touch injection site area after cleaning.

Hold the body of the Auto-injector in one hand and pull the Red Cap straight off.



Warning: Do not put or press thumb, fingers or hand over the Yellow Needle Guard, doing so may result in a needle stick injury.

Step 3 - Inject the Medicine

- ▶ 3A - Place Auto-injector straight on your injection site
- ▶ 3B - Perform Injection
- ▶ 3C - Remove Auto-injector from skin

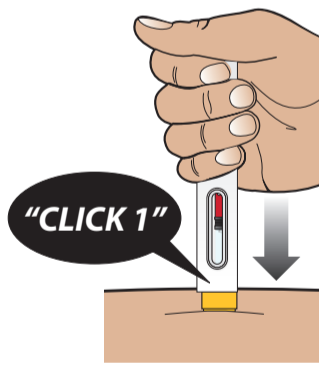
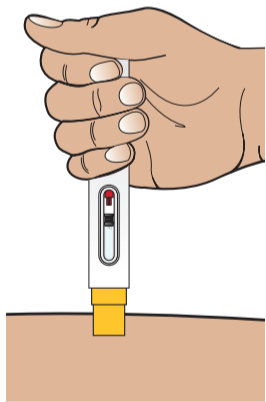
Place the Auto-injector straight on your injection site (90 degrees) with the Yellow Needle Guard end gently pressed against your skin.

Press and hold the Auto-injector down against your skin. You will hear the first "Click 1" as the injection starts. Continue to hold the device down until you hear the second "Click 2."

Wait 5 seconds before you remove the Auto-injector!

After "Click 2," continue to hold down and slowly count to 5 to make sure you receive your full dose.

Remove the Auto-injector by lifting it straight away from your skin. The Yellow Needle Guard will drop down and lock over the needle.



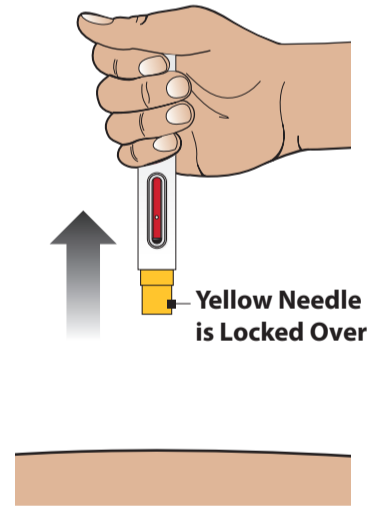
HOLD!



WAIT!

CONTINUE TO HOLD DOWN AND SLOWLY COUNT TO 5.

⌚ 1...2...3...4...5



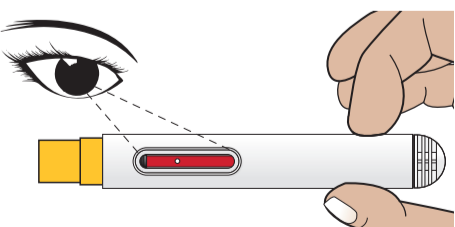
Yellow Needle Guard is Locked Over Needle

Important: To receive your full dose, always hold the Auto-injector down on your injection site for additional time after you hear the second click. This allows all of the medicine to be delivered.

Step 4 - Confirm Injection and Dispose the Auto-injector

- ▶ 4A - Confirm Red Color in Medicine Viewing Window
- ▶ 4B - Disposal of the Auto-injector
- ▶ 4C - Treat Injection Site

Look to confirm that the Red Plunger Rod has filled the Medicine Viewing Window. This means you received the full dose.



Caution: Call your healthcare provider if the Red Plunger Rod has not filled the Medicine Viewing Window. This may mean that only a partial dose was delivered.

Do not try to reuse the Auto-injector.

Put your used Auto-injector, caps, needles, and sharps in an FDA-cleared sharps disposal container right away after use. Do not throw away (dispose of) loose needles and syringes in your household trash. Do not recycle your used sharps disposal container.

If you do not have a FDA-cleared sharps disposal container, you may use a household container that is: made of a heavy-duty plastic; can be closed with a tight-fitting, puncture-resistant lid, without sharps being able to come out; upright and stable during use; leak-resistant; and properly labeled to warn of hazardous waste inside the container.

When your sharps disposal container is almost full, you will need to follow your community guidelines for the right way to dispose of your sharps disposal container. There may be state or local laws about how you should throw away used needles and syringes. For more information about safe sharps disposal, and for specific information about sharps disposal in the state that you live in, go to the FDA's website at: <http://www.fda.gov/safesharpsdisposal>.

Do not dispose of your used sharps disposal container in your household trash unless your community guidelines permit this. Do not recycle your used sharps disposal container.

If needed, make sure you get a refill of your Auto-injector.



Treat the injection site with a cotton ball, gauze pad or bandage, as needed.

Do not rub the injection site.

Manufactured for **UPSHER-SMITH LABORATORIES, LLC** Maple Grove, MN 55369

ZEMBRACE and SymTouch are registered trademarks of Upsher-Smith Laboratories, LLC.

UPSHER-SMITH

This Instructions for Use has been approved by the U.S. Food and Drug Administration.

This product may be covered by one or more U.S. patent(s). See www.uspatents.com.

TS-275-US

Revised: 2/2021

PM-000369.02